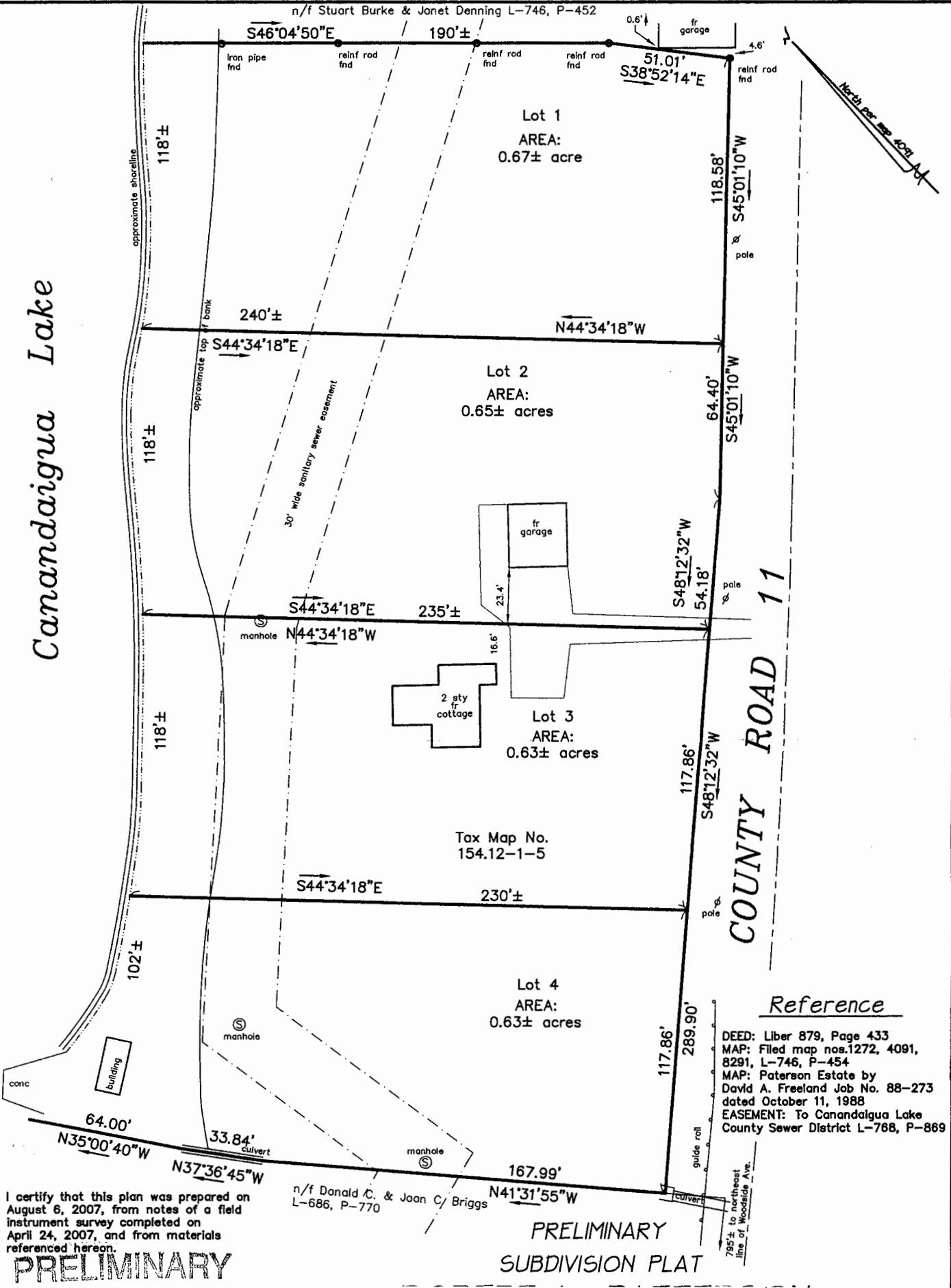


Canandaigua Lake

n/f Stuart Burke & Janet Denning L-746, P-452



Lot 1
AREA:
0.67± acre

Lot 2
AREA:
0.65± acres

Lot 3
AREA:
0.63± acres

Tax Map No.
154.12-1-5

Lot 4
AREA:
0.63± acres

COUNTY ROAD 11

Reference

DEED: Liber 879, Page 433
MAP: Filed map nos. 1272, 4091, 8291, L-746, P-454
MAP: Paterson Estate by David A. Freeland Job No. 88-273 dated October 11, 1988
EASEMENT: To Canandaigua Lake County Sewer District L-768, P-869

I certify that this plan was prepared on August 6, 2007, from notes of a field instrument survey completed on April 24, 2007, and from materials referenced hereon.

PRELIMINARY

PRELIMINARY
SUBDIVISION PLAT

n/f Donald C. & Joan C. Briggs L-686, P-770

795 ± to northeast line of Woodside Ave.